



Chile



**ENCUENTROS**  
**ChileGlobal**  
**ROTTERDAM 2015**  
*Developing sustainable futures*

**08 - 10 July 2015**  
**Rotterdam, NL**  
**Erasmus MC - Kunsthal**

# INDICE

Welcome to Encuentros 03

---

Welcome from organizers 04

---

Greeting from our sponsors 06

---

Sponsors 08

---

Programme 10

---

General Information 12

---

Team 14

---

Programme 20

---

Moderators 37

---

Acknowledgements 39

---

Notes 40

---

[facebook.com/RedEncuentros](https://facebook.com/RedEncuentros)

[twitter.com/RedEncuentros](https://twitter.com/RedEncuentros)

[www.encuentros2015.org](http://www.encuentros2015.org)

---

# WELCOME TO ENCUEUNTROS CHILEGLOBAL ROTTERDAM 2015

developing sustainable futures

---

Dear members of the Encuentros network and participants in Encuentros2015.

Let me welcome you to the city of Rotterdam. The home of more than 600,000 people from more than 170 different nationalities, Rotterdam is a vibrant city that proudly distinguishes itself for its multicultural composition, as well as its modern outlook, and its openness to new technologies. It doesn't take more than a few days here to realize that Rotterdam is permanently re-thinking (and improving) itself, always open for new initiatives and ideas.

In the mid-1950, Rotterdam inaugurated Europe's first pedestrian shopping zone and the biggest trade center in the Netherlands. A little more than two decades later, the city became known for the playfulness of its tilted cube houses and the transparency of its large public library. Its icons also include impressive bridges over the Maas and monumental architecture. Only in the last two years, the city has attracted worldwide attention because of De Rotterdam - a building designed as an entire city—the fully renovated Central Station and the spectacular Market Hall, with its interior fully covered by a gigantic and colorful mural.

At the core of each new initiative, Rotterdam places the wellbeing of its residents and questions of sustainability. We understand that a project can only work if it properly meets social and environmental needs. This is

particularly clear in our efforts to turn the Port of Rotterdam—currently, the largest port in Europe—also into the most sustainable port in the world by 2030. You can be sure, we are moving carefully with enormous enthusiasm in the right direction.

It makes sense, then, for Encuentros2015 to take place in this city and it is the city's honor as well to welcome this international effort to push sustainability further beyond the Dutch context. We hope to serve as an example as much as we are committed to continue experimenting and trying our best to turn sustainability into a reality that everyone can experience in their everyday life and of which our children will be able to profit in the future.



**MR. AHMED ABOUTALEB**  
Mayor of Rotterdam

# WELCOME FROM

## MANUEL TOLEDO OTAEGUI

PRESIDENT, ENCIENTROS 2015

---

### Developing Sustainable Futures

The future of Chile is not only in our hands but also in our heads. No doubt about it. However, we know that those hands and heads require favourable conditions to thrive and to build this future together. We strongly believe everyone is needed to face this important challenge.

Chile's most valuable capital - today and always- has been its people. Today we count with the most educated generation ever in the short history of our country. This has allowed many of us to dream about Chile from within and from afar.

Activities such as the Encuentros ChileGlobal 2015 conference allow us to get to know ourselves - and Chile- from a wide array of visions. We are confronted with the fact that our country cannot be captured in one image, but is composed of many. Those many images link to one that we all recognize as ours: our people, our land, and our future.



# ORGANIZERS



To think and to discuss the principles that will allow us to develop our future is what summons us today. We are here to make real our dreams about a country where education and healthcare are virtues rather than goods, where the benefits of our finite natural resources allow us to build and preserve a heritage for those to come, where citizens feel part of the development of our cities and where social equity is fostered.

Chile has to assume this great responsibility today, a unique challenge to continue shaping its sustainable future, where the common good and diversity are fundamental. Welcome to Encuentros ChileGlobal Rotterdam 2015.

# GREETINGS FROM

## MYRIAM GOMEZ

DIRECTORA EJECUTIVA FUNDACIÓN IMAGEN DE CHILE

---

Every day Chile is progressing toward becoming a knowledge society, contributing diverse perspectives to the search for solutions to problems affecting much of the world today. We have increasingly positioned ourselves, not only on the basis of the conditions found within our country's territory—a true natural laboratory given its extraordinary geographical, climate and biological diversity—but also because of the quality of our professionals.

One example of this is the extensive group of distinguished Chilean researchers working outside the country, a community of excellence that strengthens the positive image Chile enjoys around the world. These professionals are some of the leading ambassadors for our Country Brand.

Nations that are able to advance in the field of science and innovation heighten their reputations. Thus, within one of the six dimensions of the “Exports” indicator analyzed each year in the Nation Brands Index study on country image evolution is a variable related to the contribution to science and technology. In the most recent study, Chile ranked 39 out of 50 nations, reflecting the substantial challenge we face in raising the visibility of our development in that area.

Therefore, at Fundación Imagen de Chile we have placed special emphasis on strengthening our network of talent outside the country, ChileGlobal, which today has more than 1,000 members working tirelessly to maintain ties to the country and contribute wherever they are located, through knowledge generated abroad.



# OUR SPONSORS



Given the importance of this issue to our country image, the Fundación is participating, for the fifth consecutive year, in the Encuentros Chileglobal conference. This successful event was held in Santiago in 2014 and will take place in Rotterdam this year. The two-day conference will be an outstanding opportunity to forge links and share experiences with people of great importance, providing a model for the various activities organized by Chileans abroad and whom we support through the talent network. This year, meetings and seminars are planned for 10 cities in the United States, Canada, the United Kingdom, Australia, Germany and Spain.

In this context, it is essential to understand that when we refer to our country image, one extremely important aspect is the country's contribution of scientific developments that benefit people around the world. For that reason, forums such as Encuentros are key factors. Previous conferences have addressed important topics and in 2015, through a multidisciplinary debate, attendees will discuss how to guarantee a sustainable future for Chile that enables it to be a key actor in the context of international science.

As the institution charged with positioning Chile competitively, we are proud to say that our country continues to move closer to becoming a true center for science, technology and innovation. Chile does this through integration and collaboration in its actions, which is also manifested in the scientific realm. In this context, by providing an opportunity to share experiences and highlight valuable examples of research in diverse disciplines, this conference is a key milestone in strengthening Chile's country image.



# SPONSORS

## SPONSORED BY

---



**ChileGlobal**  
RED DE TALENTOS



**recbionova**

**Erasmus  
University  
Rotterdam**

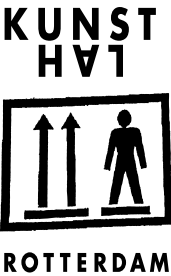


**Universiteit  
Leiden**





# SUPPORTED BY





# PROGRAMME

Erasmus MC - Kunsthal  
Rotterdam



# PROGRAMME

## 08/07/ 2015

9:00 - 12:30

### REGISTRATION

*Kunsthal*

12:30 - 15:00

### PICTURE OF TODAY'S CHILE (PLENARY)

*Kunsthal*

15:00 - 16:00

### COFFEE BREAK / START POSTER SESSION

*Erasmus MC*

16:00 - 17:30

### NATURAL RESOURCES (PARALLEL SESSION)

*Erasmus MC*

16:00 - 17:30

### SOCIAL EQUITY (PARALLEL SESSION)

*Erasmus MC*

15:30 - 18:00

### COFFEE BREAK

*Erasmus MC*

18:00 - 19:30

### EDUCATION (PARALLEL SESSION)

*Erasmus MC*

18:00 - 19:30

### PRODUCTIVE REGIONS (PARALLEL SESSION)

*Erasmus MC*

19:30 - 21:00

### AJÍ CHALLENGE / COCKTAIL

*Erasmus MC*

## 09/07/ 2015

8:00 - 9:00

### REGISTRATION

*Kunsthal*

9:30 - 11:00

### MODELLING THE FUTURE (PLENARY)

*Kunsthal*

11:00 - 12:00

### COFFEE BREAK

*Kunsthal*

12:00 - 13:30

### KEY CHALLENGES FOR SUSTAINABLE (PLENARY)

*Kunsthal*

15:00 - 16:30

### SOCIAL INFRASTRUCTURE (PARALLEL SESSION)

*Erasmus MC*

15:00 - 16:30

### ENERGY (PARALLEL SESSION)

*Erasmus MC*

16:30 - 15:30

### POSTER SESSION / COFFEE BREAK

*Erasmus MC*

17:30 - 19:00

### TALENT FAIR

*Erasmus MC*

17:30 - 19:00

### CHILEAN STUDENT ASSOCIATIONS

*Erasmus MC*

19:00 - 23:00

### CONFERENCE PARTY

*Groothandelsgebouw - The Suicide Club*

## 10/07/ 2015

10:30 - 13:00

### REGISTRATION

*Erasmus MC*

13:00 - 14:30

### HEALTHCARE (PARALLEL SESSION)

*Erasmus MC*

13:00 - 14:30

### SUSTAINABLE DEVELOPMENT IN EMERGENCY CONTEXT (PARALLEL SESSION)

*Erasmus MC*

14:30 - 15:30

### COFFEE BREAK

*Kunsthal*

15:30 - 18:00

### TAKING ACTIONS (CLOSING PLENARY)

*Kunsthal*

18:00 - 19:00

### COCKTAIL

*Kunsthal*

# GENERAL INFORMATION

## LOCATION

---

### **Erasmus MC (Parallel Sessions)**

S-Gravendijkwal 230, 3015 CE Rotterdam.

### **Kunsthal Rotterdam (Plenary Session)**

Kunsthal Rotterdam Museumpark, Westzeedijk 341 - 3015 AA Rotterdam.

Kunsthal Rotterdam is in the Museumpark, 20 minutes' walking distance from the Central Station. Take tram 8 towards Spangen (the Kievitslaan stop); alternatively it is a 5-minute walk from the Eendrachtsplein and Leuvehaven metro stations.

### **The suicide club (Party Thursday Night)**

Stationsplein 45 - 3013 AK Rotterdam.

This bar is next to the Central Station of Rotterdam.

## ACCESS

---

### **Erasmus MC**

**Metro:** Dijkzigt, line A, B and C.

**Bus:** 44

**Tram:** 8 and 4

### **Kunsthal Rotterdam**

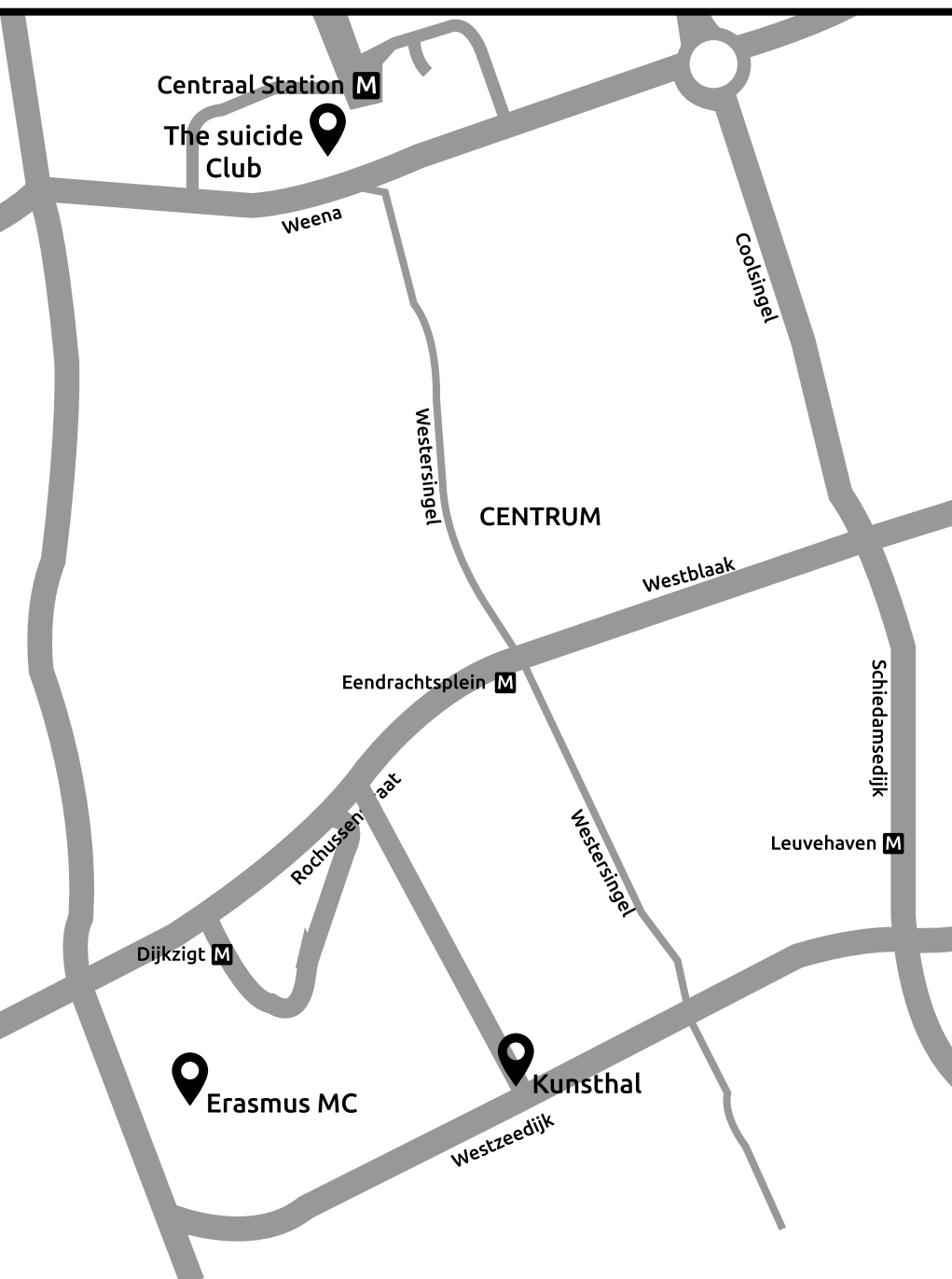
**Metro:** Eendrachtsplein, line A, B and C. | Leuvehaven, line D and E.

**Tram:** 8

### **The Suicide Club**

**Metro:** Centraal Station, line D and E.

**Tram:** 4, 8, 21, 23, 25



# TEAM

## ORGANIZERS

---



### **MANUEL TOLEDO OTAEGUI**

President

---

Industrial Designer and Cultural Manager

[mto@toledotaegui.com](mailto:mto@toledotaegui.com)

[@toledotaegui](#)



### **VÍCTOR GUADALUPE**

Vice-president

---

PhD in Industrial Microbiology

[vitoguadalupe@gmail.com](mailto:vitoguadalupe@gmail.com)

[@bendrix\\_vg](#)



### **ISABEL AWAD**

Communications Director

---

PhD in Communication and professor in the Department of Media and Communication at Erasmus University Rotterdam

[awad@eshcc.eur.nl](mailto:awad@eshcc.eur.nl)



### **VICTORIA HEINSOHN BULNES**

Communications Director

---

Journalist and MSc in Intercultural Communication

[v.heinsohn@gmail.com](mailto:v.heinsohn@gmail.com)

[@vmheinsohn](#)



### **DAPHNE GEELEN**

Program Director

---

PhD in Industrial Design Engineering

daphnegeelen@yahoo.com



### **CAROLINA MÉNDEZ ORELLANA**

Logistics Director

---

PhD in Neuroscience of Language

carolinamendez@me.com

@CpMendezO



### **LUIS CARTER**

Finance Director

---

Veterinary surgeon, MBA and PhD candidate for Business Economics in WUR

luiscarter@uach.cl



### **SOLEDAD CONTRERAS**

Program Director

---

MSc in Environmental Sciences and Sustainable Development

scont@yahoo.com

@SoleCB



### **JANETTE CABEZAS**

Journalistic Producer

---

Journalist, specialized in Development and International Cooperation



## SUB DIRECTORS

---



### MARTÍN ARIAS LOYOLA

Subdirector - Productive landscapes

---

PhD candidate in Economic Geography / Planning Studies

[martin.loyola.11@ucl.ac.uk](mailto:martin.loyola.11@ucl.ac.uk)



### LUIS GONZÁLEZ

Subdirector – disasters

---

Architect and researcher in Universidad de Chile's  
Reconstruction Observatory

[gonzalezgleduardo@gmail.com](mailto:gonzalezgleduardo@gmail.com)



### LUZ MARÍA VERGARA

Subdirector – Social equality

---

Architect and PhD (c) in Housing Management at TUDelft

[l.m.vergaradalencon@tudelft.nl](mailto:l.m.vergaradalencon@tudelft.nl)



### PABLO RIVERA

Subdirector – Education

---

PhD in Education and Society

[pablorivera@ub.edu](mailto:pablorivera@ub.edu)



### **TRINIDAD COVARRUBIAS**

Subdirector – Healthcare

---

Trained physician and MSc in Philosophy, Politics, and Economics of Health

tcovarrubiasc@gmail.com



### **DANIELA VICHERAT**

Subdirector – Social infrastructure

---

Assistant Professor in Sociology in the Global Challenges Program of Leiden University College

d.a.vicherat.mattar@luc.leidenuniv.nl



### **CARMEN CONTRERAS**

Subdirector – Call for posters and Pecha Kucha presentations

---

PhD candidate in International Development

ccontrerasro@gmail.com



### **ANDRÉS SCHLAGETER**

Subdirector – Natural resources

---

PhD candidate in Animal Science

andres\_schlageter@yahoo.com



### **CATALINA MONTENEGRO**

Subdirector – Education

---

PhD candidate in Education Arts



## **BERNARDO CIENFUEGOS**

Subdirector – Energy

---

PhD ( c) Technische Universität Darmstadt

bernardo.cienfuegos@kit.edu

## **SENIOR ADVISORY BOARD**

---



## **CRISTIÁN HERNÁNDEZ-CUEVAS**

Co-founder and chairman

---

MSc in Bioscience Enterprise

c.hernandez@cienciavida.cl

@latingene



## **DANIEL AMONACID**

Finance director

---

Biochemist and Doctor in Molecular Informatics

daniel.almonacid@unab.cl

@DanielAlmonacid



## **LUIS PABLO HERVÉ**

Finance director

---

Veterinary surgeon and Doctor in Epidemiology

lpherve@u.uchile.cl



## **MARÍA JOSÉ NAVARRETE**

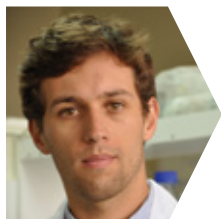
Director of programming

---

Veterinary surgeon and Doctor in Pathology

majose.navarrete@uach.cl

@Cote\_Navarrete



## **JUAN PABLO HONTAVILLA**

Media director

---

Journalist and historian

hontavilla@gmail.com

---

# PROGRAMME

## OPENING PLENARY

---

### PICTURE OF TODAY'S CHILE

---

Moderator: Michiel Baud | Day: July 8th | Time: 12:30 - 15:00

---

The plenary opening session will focus on the current Chile. Hereby we intend to establish a starting point for reflection on Chile's capacities and limitations, to articulate the context we are in today. This session will catalyze our discussions during the conference.



#### **HANS VAN LEEUWEN**

*Director Research & Education at Erasmus MC*

---

Hans van Leeuwen is director research and education at Erasmus MC. He is professor of Calcium and Bone Metabolism and founder of a start-up company (Therosteon) focussing on bone anabolic therapeutics.



#### **JORGE JIMENEZ**

*Pediatrician and Full Professor of Public Health*

---

Jimenez is Former minister of health in Chile (1990-1992). Since 2009 he is member and Chairman of the National Advisory Board on Vaccines and Immunizations Strategies CAVELto the Ministry of Health of Chile.



### **MANFRED MAX-NEEF**

*Economist, founder of the Centre for Development Alternatives (CEPAUR)*

Professor Manfred Max-Neef is known as the father of “barefoot economics”—an approach that brings economics down to earth, closer to the reality of poor people—and for his efforts to look for alternatives to make development sustainable and fair. He is professor of Ecological Economics at the Institute of Economics of Universidad Austral de Chile.



### **CAREL RICHTER**

*Director Foreign Economic Relations at the ministry of Foreign Affairs*

Is the head of International Partnerships and Top Industries of the Directorate General for Foreign Economic Relations of the Dutch Ministry of Foreign Affairs. In the last decade, he has held several positions as senior diplomat for the Kingdom of the Netherlands in Bangladesh, Panama, Costa Rica, El Salvador, Honduras, Egypt, and Afghanistan. Moreover, within the Foreign Affairs Ministry, he was also deployed as a conflict analyst and mediator in Guatemala and Uganda.

---

# PARALLEL SESSION

---

## SOCIAL EQUITY

---

Moderator: Daniela Vichera | Day: July 8th | Time: 16:00 - 17:30

---

In terms of wealth concentration, Chile is among the most unequal nations in the world. Thus, the question of how to tackle this tendency is a concern of politicians, intellectuals, activists and lay citizens. This session centers on the following questions: What do we talk about when we talk about “social equity” in Chile? What types of social practices do current reforms aim at and legitimize? What kind of social equity is underpinning the project of a sustainable Chile?



### JAVIER GONZÁLEZ

*Affiliated Lecturer and PhD Researcher at the Centre of Development Studies, University of Cambridge*

Alvaro González is currently finishing his PhD. He has participated in several research projects in Chile and the United Kingdom focusing on school improvement and effectiveness, and education policy.



### BERNARDITA MUÑOZ CHEREAU

*PhD in Education at the University of Bristol*

Bernardita Muñoz's doctoral work focused on Chilean secondary schools' interpretation of examination results for accountability purposes by complementing raw league tables or a ranking approach with fairer and more accurate approaches.

## PECHA KUCHA

---



### CARLOS VILLALOBOS BARRIA

*PhD and now Postdoctoral researcher at the Faculty of Economics, University of Göttingen*

Carlos Villalobos is associated researcher at ECI-Managing Human Development since 2012, where he has been participating in various research projects about poverty and inequality in Latin America



# PARALLEL SESSION

---

## NATURAL RESOURCES

---

Moderator: Andrés Schlageter | Day: July 8th | Time: 16:00 - 17:30

---

The exploitation of natural resources is the basis of the Chilean economy. However, the current resource exploitation logic in Chile poses a serious threat for the possibilities of future generations to access to such resources. This session focuses on sustainability as a vision that seeks to provide for the needs of humanity while safeguarding the environment so that it remains capable of providing for the needs of future generations.



**JAN WEIJMA**

*Researcher & Lecturer, Sub-department of Environmental Technology*

---

Jan Weijma has more than 15 year experience in wastewater treatment and recycling, both as researcher and as engineer. He has worked in the academic environment at Wageningen University as well as in the business environment.



**GERRY VAN DE VEN**

*Agronomist at Wageningen University*

---

She worked in interdisciplinary teams with a focus on the system level in Europe and Africa. My main interest is the relation between agriculture and its environment.

## PECHA KUCHA

---



**DANIELA BUSTOS**

---

# PARALLEL SESSION

---

## EDUCATION

---

Moderator: Pablo Rivera | Day: July 8th | Time: 18:00 - 19:30

---

The need of an educational reform is prominent in Chile's agenda. Is the quality of schools equally good throughout the country? What role do schools play in terms of social inclusion? This session addresses these questions and discusses initiatives to promote stable transformations that may give way to the consolidation of an inclusive and democratic educational model and secure the welfare and equity to all citizens.



### **XAVIER BONAL**

*Professor of Sociology at the Universitat Autònoma de Barcelona (UAB)*

Xavier Bonal directs the research group Globalisation, Education and Social Policies (GEPS) at the UAB. He is the current director of the GLOBED Project, an Erasmus Mundus Masters on Education Policies for Global Development.



### **ÁLVARO GONZÁLEZ**

*PhD candidate at the UCL Institute of Education, Univerity College London*

Javier Gonzales' PhD research is about inequality and social stratification in higher education and labour markets. He is also a columnist in La Tercera newspaper and a former cabinet advisor.



### **MARIANO FERNÁNDEZ ENGUITA**

*Professor at the U. Complutense of Madrid, Department of Sociology VI*

Mariano Fernández-Enguita has researched and published widely on social inequality, organizations and education. Now he is leading the project Educational Institutions in an Information Age for the Spanish R+D program.

---

# PARALLEL SESSION

---

## PRODUCTIVE REGIONS

---

Moderator: Martín Arias Loyola | Day: July 8th | Time: 18:00 - 19:30

---

Globalization's promise of national and regional development has not always been met. Indeed, globalization has sometimes been accused of leading to problems and crises. To avoid these, it is necessary to search for local solutions to global problems, emphasizing the role of the regions as agents of sustainable development. Thus, this session focuses on how 'regional productivity' can help to face the challenges of globalization.



### NICK PHELPS

*Professor of Urban and Regional Development at the Bartlett School of Planning, University College London*

---

Nicholas Phelps is presently researching the economic geography of the Chilean mining industry and aspects of the urban development process in Santiago de Chile.



### DIEGO SEPÚLVEDA

*Senior researcher at the department of Urbanism, Delft University of Technology*

---

Diego Sepúlveda is designer and a regional planner, actively involved in research at the Randstad Centre for Spatial Planning in The Netherlands and works as a guest professor in several institutions.

---

# AJI CHALLENGE

---

Day: July 8th | Time: 19:30 - 21:00

---

Ají Challenge is a competition between starting entrepreneurs as well as a support network for innovative businesses that aim to offer solutions to problems in society. Together with Massachusetts Institute of Technology (MIT) and Universidad Adolfo Ibáñez (UAI) the selected projects receive coaching in topics such as business models and intellectual property. During Encuentros ChileGlobal 2015, a jury will elect the entrepreneurs that have most potential to create global impact.

---

## FINALIST

---



---

### PIC

PIC (Preserve in Community) is a platform that creates real action to preserve and protect ecosystems around the world. The ultimate goal is creating natural parks by preserving different ecosystems around the world and becoming the first global “greencrowdfunding” for conservation projects. The land that you choose will be preserved forever and you’ll become a co-founder of it for 1 dollar.



---

### EKAIA

EK01, by E-Kaia, is a portable device that captures and converts plant’s energy into electricity through a biocircuit and you can charge low power electronic devices like smartphones.



---

### SHEL-LIFE

Shel-Life is the solution for a fruit industry problem: dehydration that generates economic losses. This product is an edible 100% organic coating that extends the life of fruits. Shel-life is a second skin that reduces the dehydration process and the microbial load and also improves sensory attributes of fruits.

## AJÍ CHALLENGE JURY

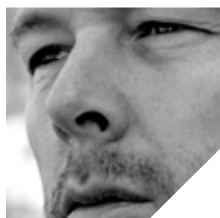
---



### HAN BREZET

---

Han Brezet held several jobs in industry and became director of the Institute of Environmental Economics (TME), before starting at Delft University. He is member of the Jury for the Royal Environmental Awards (Duurzame Lintjes) in the Hague.



### WALTER AMERICA

---

Walter Amerika started his office CI 3 in 2004 to offer a broader overview on and support with creativity and innovation.

His working tools are design thinking, scenario sketching and brandbuilding. He advises corporate companies as well as start-ups, cities and regions, government and public organizations on how to incorporate creativity and innovation as management drivers to add social and business value on the short, mid or long term.



### CRISTIÁN HERNÁNDEZ-CUEVAS

---

Cristián Hernández has started several companies and has worked as a consultant for different firms and investment funds, both in Chile and the UK. In 2008, Hernández joined Fundación Ciencia & Vida as its Chief Business Officer. Currently, he is also the CEO of the Chilean start-up Andes Biotechnologies. Hernández is co-founder and chairman of RedEncuentros.

---

# PLENARY

---

## MODELLING THE FUTURE

---

Moderator: Han Brezet | Day: July 9th | Time: 9:00 - 11:00

---

Having identified Chile's place in sustainable development worldwide, we can make plans and look for possible directions. This plenary session will focus on different perspectives to approach development and discuss cases that are relevant for Chile. We consider it important to discuss based on different perspectives for social and technological innovation.



### DÉSIRÉE MAJOOR

*Vice-president of the Board of the Hogeschool voor de Kunsten Utrecht (University of the Arts Utrecht) and member of the 'Top-team' Creative Industries*

---

As a member of the top-team Creative Industries, Desiree Majoor is in charge of the Human Capital Agenda, which focuses on three main issues: the transition from education to business, creativity throughout educational stages, and lifelong learning in the creative industries.



### MARCUS FERNHOUT

*Managing director of Cambridge Innovation Center (CIC) campus in Rotterdam*

---

Marcus Fernhout is managing director of Cambridge Innovation Center (CIC) campus in Rotterdam. He is a graduate of both the Rotterdam School of Business and the Portsmouth Business School. graduated of both the Rotterdam School of Business and the Portsmouth Business School.



## **SIEMEN COX**

*Founder of RotterZwam*

---

Rotterzwam is a cooperative that practices and promotes a 'blue economy' (also referred to a circular economy). They produce oyster mushrooms on coffee grounds.



## **CRISTIÁN HERNÁNDEZ-CUEVAS**

*MSc in Bioscience Enterprise*

---

Cristián Hernández is Chief Business Officer of fundación Ciencia y vida. He is the CEO of the Chilean start-up Andes Biotechnologies and co-founder and chairman of RedEncuentros.



---

# PLENARY NOBEL PRIZE

---

## KEY CHALLENGES FOR SUSTAINABILITY

---

Moderator: Patricio Silva | Day: July 9th | Time: 12:00 - 13:30

---

In Key Challenges for Sustainability two internationally experienced speakers, renowned for their work, talk about the challenges for sustainable development in a global as well as Chilean context. Mohan Munasinghe and Kitty van der Heijden will share their lessons learnt and latest insights.



### MOHAN MUNASINGHE

*Founder Chairman of Munasinghe Institute for Development (MIND)*

---

Professor Mohan Munasinghe is an internationally renowned authority on sustainable development, climate change, economics, energy and environment. He shared the 2007 Nobel Prize for Peace, as vice chair of the UN Intergovernmental Panel on Climate Change (IPCC-AR4).



### LISET MEDDENS

*Coordinator of the fossilfree divestment campaign in the Netherlands.*

---

Environmental scientist graduated on a large nature conservation project in Suriname. In 2011 she was elected as the UN youth representative on sustainable development.

# PARALLEL SESSION

---

## SOCIAL INFRASTRUCTURE

---

Moderator: Roberto Rocco | Day: July 9th | Time: 15:00 - 16:30

---

One of the pending challenges to achieve a sustainable future for Chile is social equity. There have been new and important initiatives in this respect, but significant challenges remain. Apart from fighting inequality, it is necessary to generate an adequate infrastructure within cities. Thus, this session addresses social inequality from the point of view of social infrastructure, both urban-residential and public infrastructure.



### LEA RÜFENACHT

*Architect, research and design project manager at the ETH Zurich Urban-Think Tank*

---

Lea Rüfenacht currently leads the collaboration between ETH Zurich, IDB and Swiss State Secretariat for Economic Affairs (SECO) for the design of innovative and sustainable building typologies for mid-size cities in Latin America.



### ELLEN VAN BUEREN

*Professor of Urban Development Management at Delft University of Technology*

---

Her research and teaching focus on cities as sites of continuous change. Van Bueren is daily board member of the Leiden-Delft-Erasmus (LDE) universities' Centre for Sustainability and has various editorial positions, among others, in the journals Smart and Sustainable Built Environment (SASBE).



### CARLOS MORALES

*Senior expert on urban land management and policy*

---

Carlos Morales runs the MSc specialization on Urban Land Development, the research workshop on Land Value Capture instruments and the diploma course on Land Management and Informal Settlements Regularisation. He also lectures on finance, housing and urban spatial theories.

---

# PARALLEL SESSION

---

## ENERGY

---

Moderator: Bernardo Cienfuegos | Day: July 9th | Time: 15:00 - 16:30

---

The intense use of fossil fuels for the generation of energy leads to environmental and long-term sustainability problems. Particularly in Chile, the problem is very relevant: most of the oil, gas and coal in the country are imported. This creates a constant dependency on international supply. This session focuses on the transition to renewable energies, the challenges associated to specific technologies, and how their influence on people's lives.



### DIRK SIJMONS

*Professor Landscape Architecture at Delft University of Technology*

---

Dirk Sijmons is landscape architect, senior consultant and former State Advisor. He is one of the founders of H+N+S Landscape-Architects and published several books related to landscape, design and energy.



### HELMUT LEHN

*Senior researcher at the Karlsruhe Institute of Technology and lecturer at the University of Heidelberg*

---

Helmut Lehn is a senior researcher in the field of sustainability and environment with a focus on sustainable resource management. As an expert for environmental chemistry he worked at the environmental department of a major city in Germany.

## PECHA KUCHA

---



### DARÍO LAFFERTE

### LEOPOLDO SAAVEDRA

### FREDY RÍOS

---

## TALENT FAIR

---

Moderator: Jeroen Deckers | Day: July 9th | Time: 17:30 - 19:00

---

### CONCEPT:

Within the Encuentros network we foster interdisciplinary interactions and approaches, we believe this can produce the new answers needed to build a sustainable future. The Talent Fair session is dedicated to highlight local professionals who, with an international perspective, have engaged with today's burning questions through their talent and curiosity. These professionals look for new answers that push the boundaries of disciplines in order to produce social impact.



#### DANA CANNAM

*Product designer, interested in exploring the relationship between craft and technology.*

---

He is founder of Qmod, an educational platform producing workshops and educational tools designed to engage students in learning the fundamentals of generating, and experimenting with alternative energy.



#### PLATIPUS

Theo Langendijk is a software engineer with a portfolio of Augmented Reality projects. Theo founded the software company Platipus in 2008.

Platipus develops Augmented Reality and other apps for wide range of different types mobile devices and for various types of clients and fields of application.



#### PIVOT CREATIVE

Pivot Creative is an Amsterdam based studio by designer Paula Colchero and architect José Subero. Their work combines knowledge of product and architectural design focusing on the reinterpretation of existing structures in response to current social issues. They believe in the strength of observing their surroundings and practice a common sense approach to design.



#### JONAS MARTENS

Jonas is a man with a vision, driven by sustainability & circular thinking, with a sense for commerce. Co-founder and captain of Better Future Factory.

---

# PARALLEL SESSION

---

## HEALTHCARE

---

Moderator: Oscar Franco | Day: July 10th | Time: 13:00 - 14:30

---

Chile has a dual healthcare system: There is a private sector, economically strong but with a small number of contributors and a public sector that covers 68% of the Chilean population, but has limited resources. The Netherlands has an insurance model based on solidarity between the rich and poor, healthy and unhealthy, young and old. This session will compare the two healthcare systems, their weaknesses and strengths.



### ERIK SCHUT

*Professor of health economics and policy in the Institute of Health Policy and Management (iBMG) of Erasmus University of Rotterdam*

---

Frederik Schut's work focuses on competition and regulation and the role of consumer behaviour in health care and health insurance markets. He is member of several editorial boards.



### JORGE JIMENEZ

*Pediatrician and Full Professor of Public Health*

---

Jimenez is Former minister of health in Chile (1990-1992). Since 2009 he is member and Chairman of the National Advisory Board on Vaccines and Immunizations Strategies CAVEI to the Ministry of Health of Chile.

---

# PARALLEL SESSION

---

## SUSTAINABLE DEVELOPMENT IN EMERGENCY CONTEXT

---

Moderator: Luis Eduardo González | Day: July 10th | Time: 13:00 - 14:30

---

Natural disasters are frequent phenomena in developing countries, especially in Chile, which has been periodically affected by floods, volcano eruptions, and earthquakes. This session seeks to draw from international experiences in the realm of seismology, urban planning, and forced displacement of people in emergency contexts, to underscore experiences that can contribute to Chile's sustainable development given the frequent emergency situations.



**ALFREDO ZAMUDIO**

*Director of the Internal Displacement Monitoring Center (IDMC)*

---

Alfredo Zamudio previously worked as a humanitarian aid worker in complex emergencies with missions to Darfur, Timor-Leste, Colombia. He has engaged with human rights related issues in a variety of contexts since 1982.



**STEFAN GREIVING**

*Executive Director of the Institute of Spatial Planning at TU Dortmund University.*

---

Stefan Greiving's work focuses on disaster risk assessment and management, as well as on adaptation to climate change. He has been in charge of 17 European research projects and many more nationally funded projects and advisory statements.



**DEYAN DRAGANOV**

*Assistant Professor at Delft University of Technology.*

---

Deyan Draganov is a member of the Society of Exploration Geophysicists and the European Association of Geoscientists and Engineers. He is an associate editor for the journal Geophysics and has published more than 30 peer-reviewed papers on different applications of the seismological methods.

---

# CLOSING PLENARY

---

## TAKING ACTIONS

---

Moderator: Cristián Hernández-Cuevas | Day: July 10th | Time: 15:30 - 18:00

---

After two days of discussion about what sustainable development means in Chilean context, there probably are many questions and proposals. Experienced professionals are asked to inspire and invite us to take action, to advance sustainable and just development that benefits ourselves, our direct surroundings, and Chile as a whole. We will end the session with an open discussion about your experiences with this year's conference, the lessons you learnt and the actions you will take.



### CÉSAR HIDALGO

*Associate professor of Media Arts and Sciences at MIT Medialab.*

---

César Hidalgo's work focuses on understanding the evolution of information in natural, social, and economic systems, and on the development of big data visualization engines designed to make available unwieldy volumes of data.



# MODERATORS



## **PATRICIO SILVA**

*Professor of Modern Latin American History at the Department of Latin American Studies (LAS), Leiden University.*

Besides working as a professor Patricio Silva has been Director of the Department of Latin American Studies at Leiden University and is currently President of the Executive Board of the Inter-University Centre for Latin American Research and Documentation (CEDLA) in Amsterdam.



## **MICHIEL BAUD**

*Director of CEDLA*

Michiel Baud graduated in Contemporary History at the University of Groningen in 1982 and received his Ph.D. cum laude in Social Sciences at Utrecht University in 1991.



## **HAN BREZET**

*Professor of Design for Sustainability (DfS) at Delft University of Technology at the Faculty of Industrial Design Engineering*

Han Brezet held several jobs in industry and became director of the Institute of Environmental Economics (TME), before starting at Delft University. He is member of the Jury for the Royal Environmental Awards (Duurzame Lintjes) in the Hague.



## **CRISTIÁN HERNÁNDEZ-CUEVAS**

*MSc in Bioscience Enterprise*

Cristián Hernández is Chief Business Officer of fundación Ciencia y vida. He is the CEO of the Chilean start-up Andes Biotechnologies and co-founder and chairman of RedEncuentros.



### **ROBERTO ROCCO**

*Full-time assistant professor working at the Chair of Spatial Planning and Strategy within the Department of Urbanism of the Faculty of Architecture at the Delft University of Technology.*

---

Full time scientific researcher at the Chair Spatial Planning and Strategy, Department of Urbanism, Faculty of Architecture, Delft University of Technology.



### **OSCAR FRANCO**

*Professor of Preventive Medicine at the Department of Epidemiology, Erasmus MC*

---

Oscar Franco is Principal Investigator of the cardiovascular epidemiology group at Erasmus MC. Furthermore, he is founder and director of ErasmusAGE and the EER (Erasmus Epidemiology Resources) and newly assigned Deputy Science Director of NIHES (Netherlands Institute for Health Sciences).



### **JEROEN DECKERS**

*Cofounder of several cultural initiatives*

---

Jeroen Deckers is cultural entrepreneur since 2004. Before he started his own business, he worked for the government as a policy advisor during two decades concerning various subjects, but always in a cultural environment.

---

# ACKNOWLEDGEMENTS

The organising team of Encuentros ChileGlobal Rotterdam 2015 would like to thank our guests for accepting our invitation and gladly collaborating with this initiative.

We also would like to thank all those who provided us with their disinterested support and advice during the process of organising this conference.

To our families and friends who supported us during the long months of work and absence. We are almost back with you!!

We apologise in advance if you do not appear in this list.

Ambassador of Chile in The Netherlands

María Teresa Infante

Edgard Eckholt

Paz Zárate

Ambassador of The Kingdom of The

Netherlands Marion Kappeyne van de Coppello

Bernardita Araya

Francisca Gómez

Myriam Gómez

Jorge Cortés

Prof. Pablo Valenzuela

Carlos Marquez

Oswaldo Marinao

René Hanssens

Mirjam van de Kamp

Tijmen Meier

Eveline Vos

Jennyfer Salvo

Prof. Jorge Babul

Catherine Lambert

Consuelo García

María José Cassaubon

Zoe Matthews

Vicente Sandoval

Dra. Sol Serrano

Consul Eleodoro Pempelfort

Alejandra Godoy

Natalia Romero

Diego Sepúlveda

Catalina Valencia

Adrie van Wijk

mrc.cl

# NOTES

This image shows a single sheet of white paper with horizontal ruling lines. The lines are evenly spaced and run across the width of the page. There are no margins, text, or other markings on the paper.

# NOTES

This image shows a single sheet of white paper with horizontal ruling lines. The lines are evenly spaced and run across the width of the page. There are no margins, text, or other markings on the paper.

[illegible]

# ENCUENTROS CHILEGLOBAL ROTTERDAM 2015

developing sustainable futures

## 08/07/ 2015

9:00 - 12:30

### **REGISTRATION**

*Kunsthal*

—

12:30 - 15:00

### **PICTURE OF TODAY'S CHILE (PLENARY)**

*Kunsthal*

—

15:00 - 16:00

### **COFFEE BREAK / START POSTER SESSION**

*Erasmus MC*

—

16:00 - 17:30

### **NATURAL RESOURCES (PARALLEL SESSION)**

*Erasmus MC*

—

16:00 - 17:30

### **SOCIAL EQUITY (PARALLEL SESSION)**

*Erasmus MC*

—

15:30 - 18:00

### **COFFEE BREAK**

*Erasmus MC*

—

18:00 - 19:30

### **EDUCATION (PARALLEL SESSION)**

*Erasmus MC*

—

18:00 - 19:30

### **PRODUCTIVE REGIONS (PARALLEL SESSION)**

*Erasmus MC*

—

19:30 - 21:00

### **AJÍ CHALLENGE / COCKTAIL**

*Erasmus MC*

## 09/07/ 2015

8:00 - 9:00

### **REGISTRATION**

*Kunsthal*

—

9:30 - 11:00

### **MODELLING THE FUTURE (PLENARY)**

*Kunsthal*

—

11:00 - 12:00

### **COFFEE BREAK**

*Kunsthal*

—

12:00 - 13:30

### **KEY CHALLENGES FOR SUSTAINABLE (PLENARY)**

*Kunsthal*

—

15:00 - 16:30

### **SOCIAL INFRASTRUCTURE (PARALLEL SESSION)**

*Erasmus MC*

—

15:00 - 16:30

### **ENERGY (PARALLEL SESSION)**

*Erasmus MC*

—

16:30 - 15:30

### **POSTER SESSION / COFFEE BREAK**

*Erasmus MC*

—

17:30 - 19:00

### **TALENT FAIR**

*Erasmus MC*

—

17:30 - 19:00

### **CHILEAN STUDENT ASSOCIATIONS**

*Erasmus MC*

—

19:00 - 23:00

### **CONFERENCE PARTY**

*Groothandelsgebouw - The  
Suicide Club*

## 10/07/ 2015

10:30 - 13:00

### **REGISTRATION**

*Erasmus MC*

—

13:00 - 14:30

### **HEALTHCARE (PARALLEL SESSION)**

*Erasmus MC*

—

13:00 - 14:30

### **SUSTAINABLE DEVELOPMENT IN EMERGENCY CONTEXT (PARALLEL SESSION)**

*Erasmus MC*

—

14:30 - 15:30

### **COFFEE BREAK**

*Kunsthal*

—

15:30 - 18:00

### **TAKING ACTIONS (CLOSING PLENARY)**

*Kunsthal*

—

18:00 - 19:00

### **COCKTAIL**

*Kunsthal*

